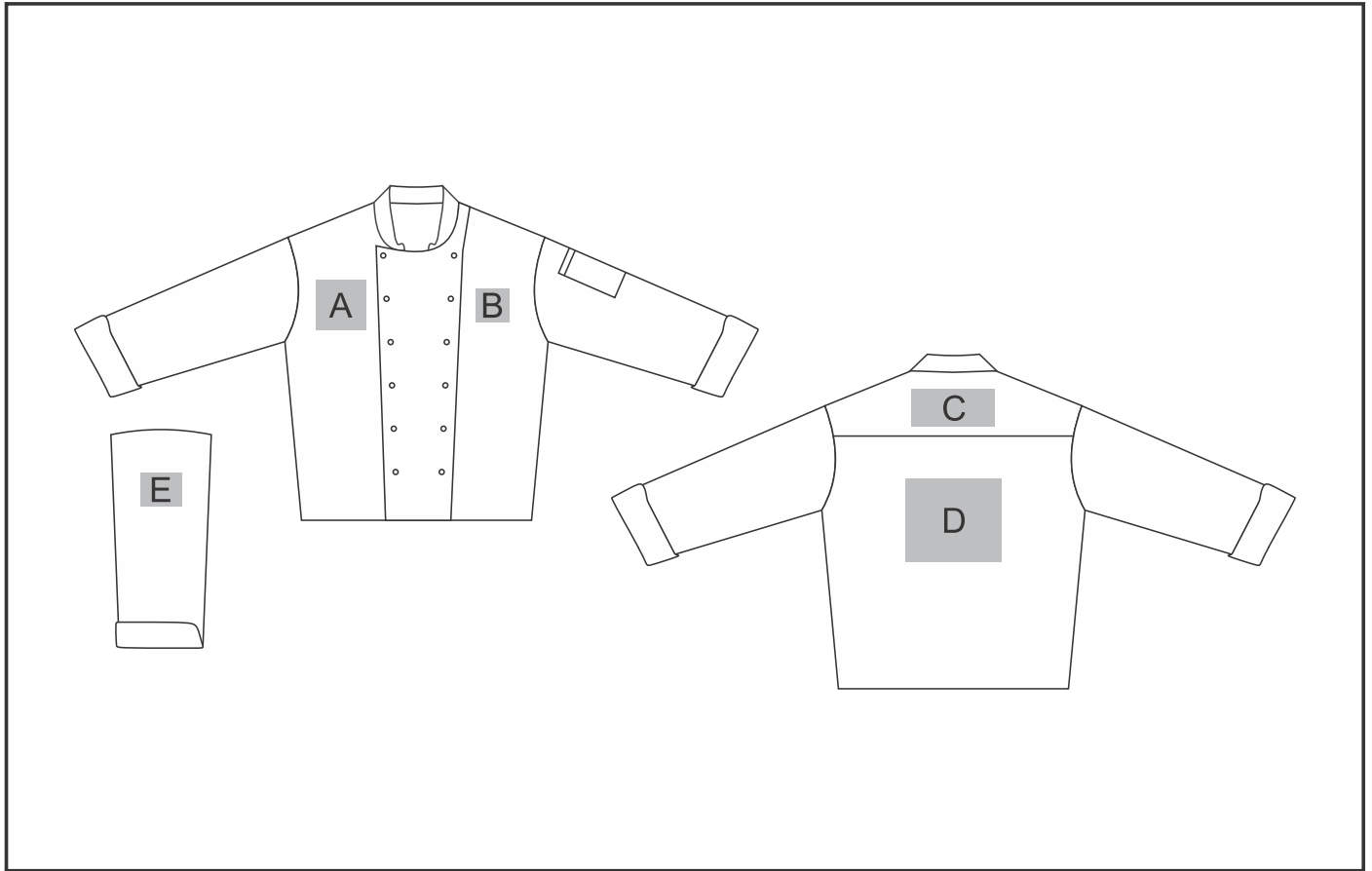


# ALT-TLN

## Unisex Long Sleeve Toulon Chef Jacket



### Need to know:

- Includes 1-Colour, 1-Position Screen Print (setup fee applies)

# **Branding Options:**

## **Position A**

1. Digital Transfer Clothing A6 (DTC-A6)  
Full Colour  
Size: 120mm wide x 120mm high
2. Screen Print (SA)  
1 Colour  
Size: 80mm wide x 80mm high
3. Silicone (STP-A)  
N/A  
Size: 30mm wide x 30mm high
4. Silicone (STP-B)  
N/A  
Size: 50mm wide x 50mm high
5. Silicone (STP-C)  
N/A  
Size: 80mm wide x 80mm high

## **Position C**

1. Digital Transfer Clothing A6 (DTC-A6)  
Full Colour  
Size: 160mm wide x 90mm high
2. Screen Print (SA)  
1 Colour  
Size: 70mm wide x 80mm high
3. Embroidery (EMB-A)  
N/A  
Size: 60mm wide x 200mm high
4. Silicone (STP-A)  
N/A  
Size: 30mm wide x 30mm high
5. Silicone (STP-B)  
N/A  
Size: 50mm wide x 50mm high
6. Silicone (STP-C)  
N/A  
Size: 80mm wide x 80mm high
7. Silicone (STP-D)  
N/A  
Size: 120mm wide x 40mm high

## **Position E**

1. Digital Transfer Clothing A6 (DTC-A6)  
Full Colour  
Size: 100mm wide x 80mm high

## **Position B**

1. Digital Transfer Clothing A6 (DTC-A6)  
Full Colour  
Size: 80mm wide x 80mm high
2. Silicone (STP-A)  
N/A  
Size: 30mm wide x 30mm high
3. Silicone (STP-B)  
N/A  
Size: 50mm wide x 50mm high
4. Silicone (STP-C)  
N/A  
Size: 80mm wide x 80mm high

## **Position D**

1. Digital Transfer Clothing A6 (DTC-A6)  
Full Colour  
Size: 148mm wide x 105mm high
2. Digital Transfer Clothing A5 (DTC-A5)  
Full Colour  
Size: 200mm wide x 148mm high
3. Digital Transfer Clothing A4 (DTC-A4)  
Full Colour  
Size: 200mm wide x 200mm high
4. Screen Print (SA)  
1 Colour  
Size: 230mm wide x 150mm high
5. Embroidery (EMB-A)  
N/A  
Size: 100mm wide x 100mm high
6. Silicone (STP-A)  
N/A  
Size: 30mm wide x 30mm high
7. Silicone (STP-B)  
N/A  
Size: 50mm wide x 50mm high
8. Silicone (STP-C)  
N/A  
Size: 80mm wide x 80mm high
9. Silicone (STP-D)  
N/A  
Size: 120mm wide x 40mm high